

- Go to [www.colorix.com/update](http://www.colorix.com/update) and enter the serial number and the password of your ColorCatch (You will find these figures on and inside the box of your ColorCatch).

**COLORIX**

search...

HOME ABOUT US COLORCATCH MARKETS RESELLERS DOWNLOAD CONTACT **UPDATE**

EN  
FR  
DE

**Language**  
English

**Log In**

Serial number:

Password:

Log in

[Password forgotten](#)

COLORIX • Copyright 2010

- First you must register.  
This is the place where you can select the language of your device.

**COLORIX**

HOME ABOUT US COLORCATCH MARKETS RESELLERS DOWNLOAD CONTACT **UPDATE**

search... 🔍

EN  
FR  
DE

[My account](#)  
[Help](#)

**Language**  
English ▾

Serial n° : 10902771  
([Logout](#))

### My account

**Welcome and thank you for choosing the ColorCatch.**  
In order to have access to the full on-line features: update your ColorCatch and select new color cards, we would be grateful if you could fill up the following form:

Company

**Firstname**  **Name**

**Address**

**ZIP Code**  **City**

**Country**  
United Kingdom ▾

Tel  Fax

Mobile

**E-mail**  **Web**

**Language of the device**  
English ▾

COLORIX • Copyright 2010

- Click on **My color cards**. Here you can select or unselect the color cards you want to program into your ColorCatch. Here you can also buy new color cards. For the measure you can also give priority to color cards you prefer. For this, click non stop on a color card name and move it up or down. Priority is given to the color card that is on top of the list. To confirm your choice, click on **Validate**.

The screenshot displays the COLORIX website interface. At the top left is the COLORIX logo. A navigation menu includes HOME, ABOUT US, COLORCATCH, MARKETS, RESELLERS, DOWNLOAD, CONTACT, and UPDATE. A search bar is located in the top right. On the left sidebar, there are links for My color cards, My account, Password, Download, and Help. Below these is a language dropdown set to English and a user identification section showing 'Serial n° : 10902771' with a Logout link. The main content area is divided into two columns. The left column, titled 'Currently available color cards', lists three items: 'RAL CLASSIC K5 Semi matt' (checked), 'NCS INDEX' (checked), and 'RAL DESIGN' (unchecked). Below this is a 'Transfer mode:' dropdown set to 'Colorcatch connected online' and a 'Validate' button. The right column, titled 'Available color cards', lists six items: 'StoColor System', 'KABE TRENDline Collection', 'RUCO 720', 'RUCO Swiss-Collection', 'SAX', and 'RAL EFFECT', each with a question mark icon. At the bottom of this column is a 'Buy new color cards >>' button. On the far right, there is a vertical language menu with EN, FR, and DE options.

- Click on **Download**. Here, you must install the application that allows you to update your ColorCatch 2. The time to install this application is about 3 minutes. It is important that you **do not connect your device to your computer during the installation**.

**COLORIX**

search...

HOME ABOUT US COLORCATCH MARKETS RESELLERS DOWNLOAD CONTACT **UPDATE**

EN  
FR  
DE

[My color cards](#)  
[My account](#)  
[Password](#)  
[Download](#)  
[Help](#)

**Language**  
English

Serial n° : 10902771  
([Logout](#))

## Download the application ColorCatch Installer

Click on the link below, save the file on your hard drive, click the button 'Run' and follow the instructions displayed on your screen.

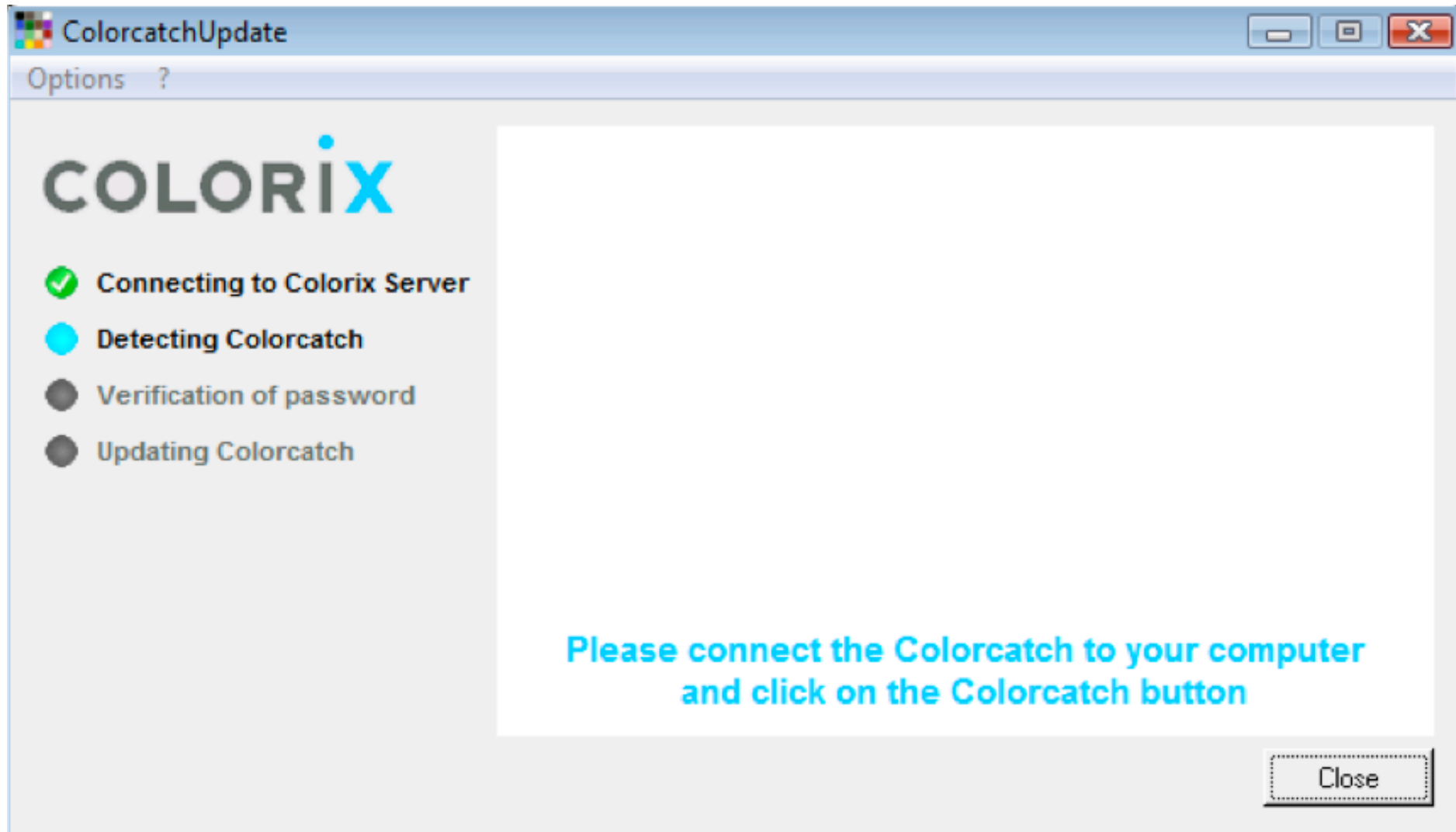
- ColorcatchUpdateInstaller.exe

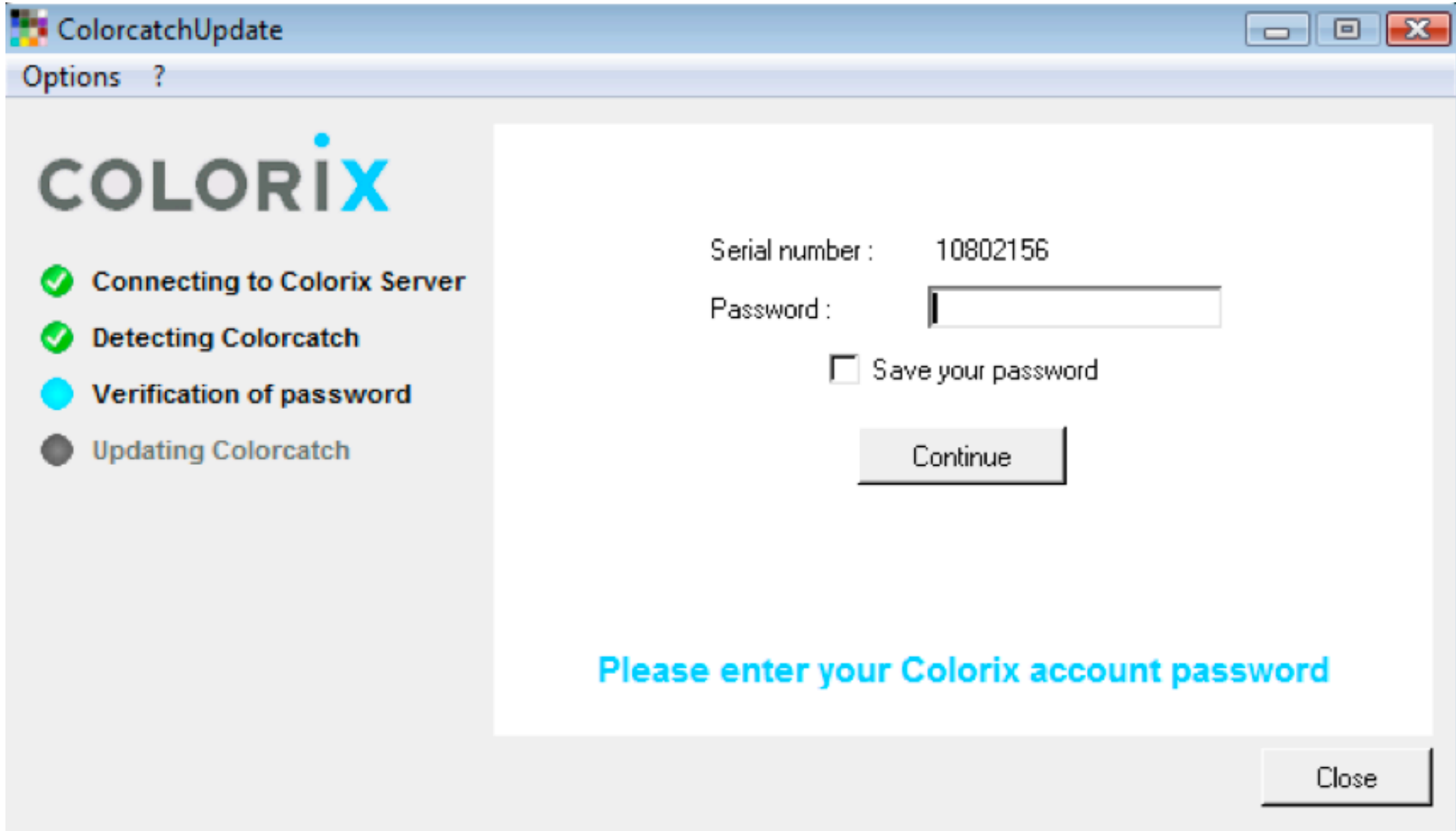
**Compatibility**  
Windows 95, 98, XP, Vista

COLORIX ● Copyright 2010



- Once the installation is finished, you will find this logo on the desktop of your computer. Double click on it. The following window opens and you just have to follow the instructions written in blue. It's as simple as that !





ColorcatchUpdate



Options ?

# COLORIX

- ✔ Connecting to Colorix Server
- ✔ Detecting Colorcatch
- Verification of password
- Updating Colorcatch

Serial number : 10802156

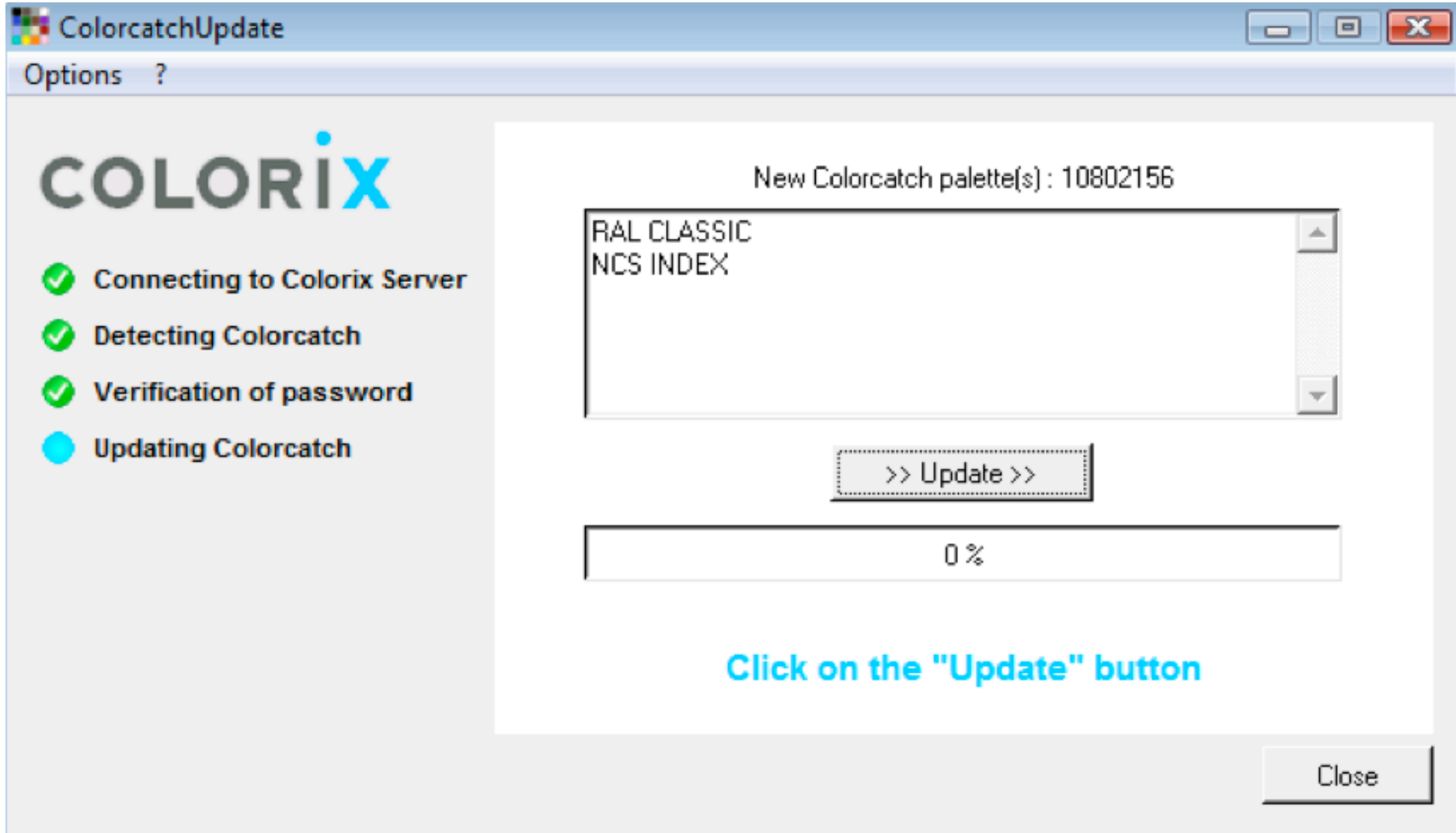
Password :

Save your password

Continue

Please enter your Colorix account password

Close



ColorcatchUpdate

Options ?

# COLORIX

- ✓ Connecting to Colorix Server
- ✓ Detecting Colorcatch
- ✓ Verification of password
- Updating Colorcatch

New Colorcatch palette(s) : 10802156

- RAL CLASSIC
- NCS INDEX

>> Update >>

0%

Click on the "Update" button

Close

ColorcatchUpdate



Options ?

# COLORIX

- ✓ Connecting to Colorix Server
- ✓ Detecting Colorcatch
- ✓ Verification of password
- Updating Colorcatch

New Colorcatch palette(s) : 10802156

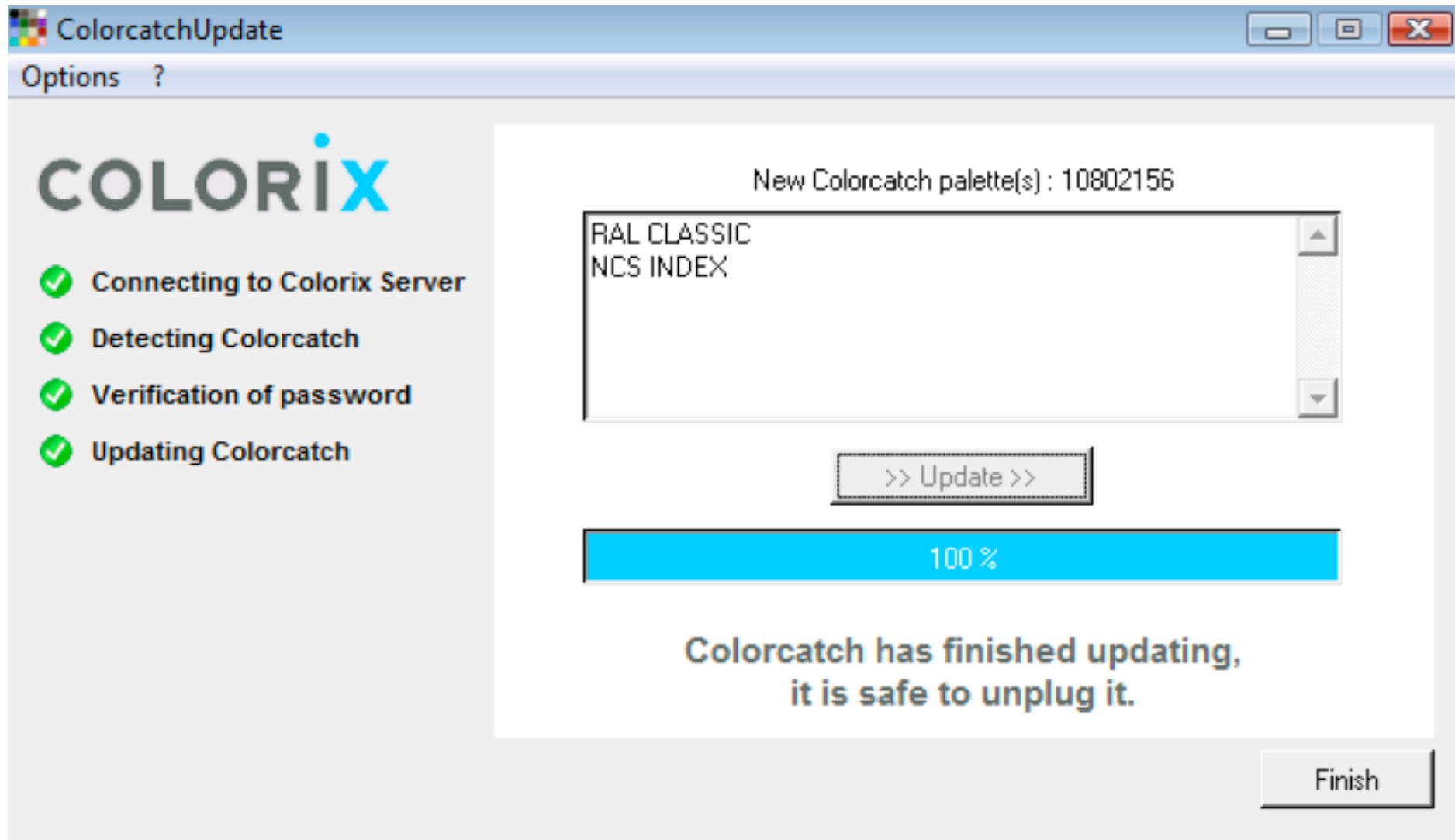
RAL CLASSIC  
NCS INDEX

>> Update >>

65 %

**Do not unplug the Colorcatch  
during the update.**

Close



ColorcatchUpdate

Options ?

# COLORIX

- ✔ Connecting to Colorix Server
- ✔ Detecting Colorcatch
- ✔ Verification of password
- ✔ Updating Colorcatch

New Colorcatch palette(s) : 10802156

RAL CLASSIC  
NCS INDEX

>> Update >>

100 %

Colorcatch has finished updating,  
it is safe to unplug it.

Finish